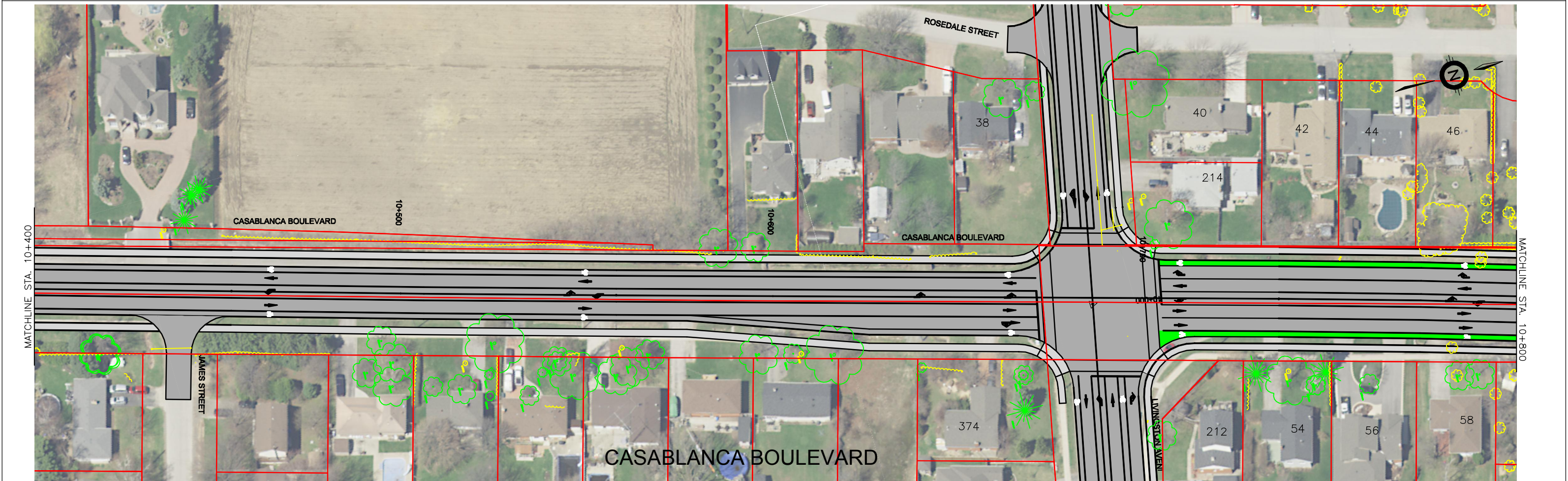
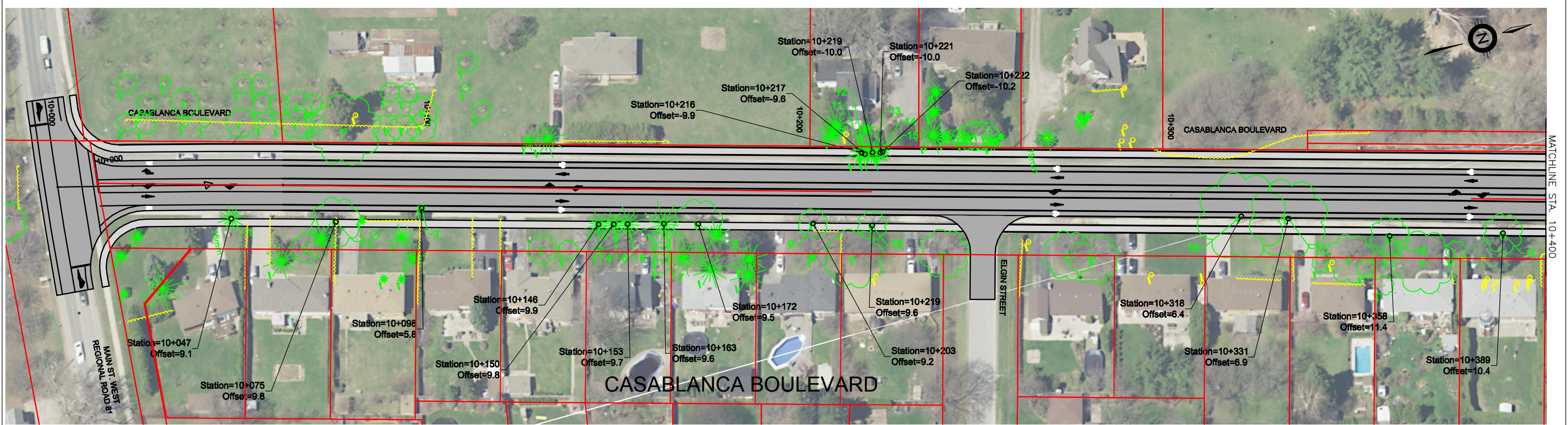


APPENDIX L

Conceptual Tree Removal Mapping



NO.	ISSUED FOR	DATE	INIT.
0	ISSUED FOR	YYYY-MM-DD	XXX
	REVISION	DATE	INIT.

NOTES/LEGEND

1 THE POSITION OF POLE LINES, CONDUITS, WATERMAINS, SEWER AND OTHER UNDERGROUND AND OVERGROUND UTILITIES AND STRUCTURES IS NOT NECESSARILY SHOWN ON THE CONTRACT DRAWINGS AND, WHERE SHOWN, THE ACCURACY OF THE POSITION OF SUCH UTILITIES AND STRUCTURES IS NOT GUARANTEED. BEFORE STARTING WORK, THE CONTRACTOR SHALL INFORM HIMSELF OF THE EXACT LOCATION OF ALL SUCH UTILITIES AND STRUCTURES AND SHALL ASSUME ALL LIABILITY FOR DAMAGE TO THEM.

2 PROPERTY LINES WERE PLOTTED USING REGISTERED PLANS AND BARS LOCATED IN THE FIELD. TO VERIFY THE ACCURACY OF THESE PROPERTY LINES, A LEGAL SURVEY SHOULD BE PERFORMED PRIOR TO CONSTRUCTION.

DRAFTING
GCC

DESIGN
SMP

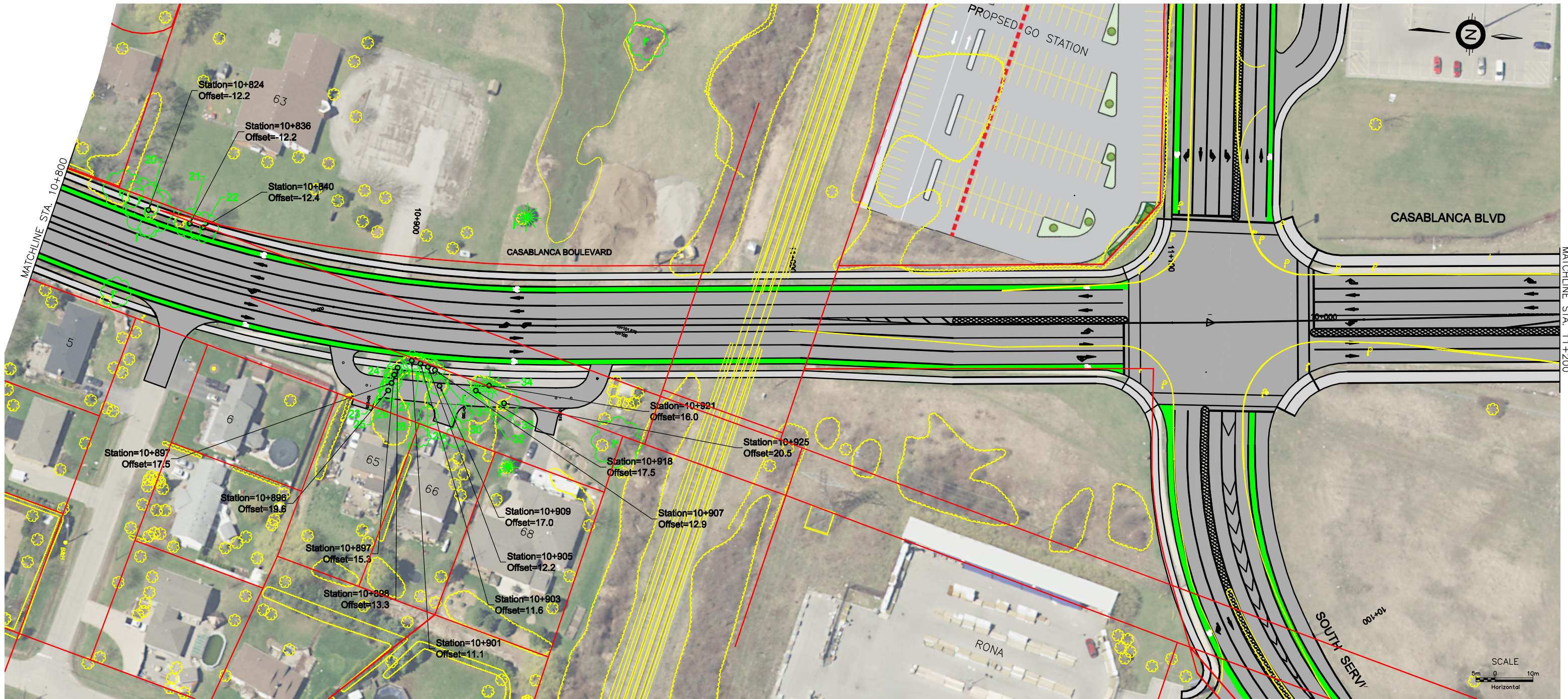
CHECKED BY
SMP

APPROVED BY
DPM



CASABLANCA BOULEVARD
STA. 10+000 TO STA. 10+800
TREE INVENTORY PLAN

CONSULTANT FILE No. 18-7650	
DATE 2018-10-24	
SCALE AS SHOWN	
REF. No. #	
DWG No. 1	REV. 0



CASABLANCA BOULEVARD

NO.	REVISION	DATE	INIT.
0	ISSUED FOR	YYYY-MM-DD	XXX

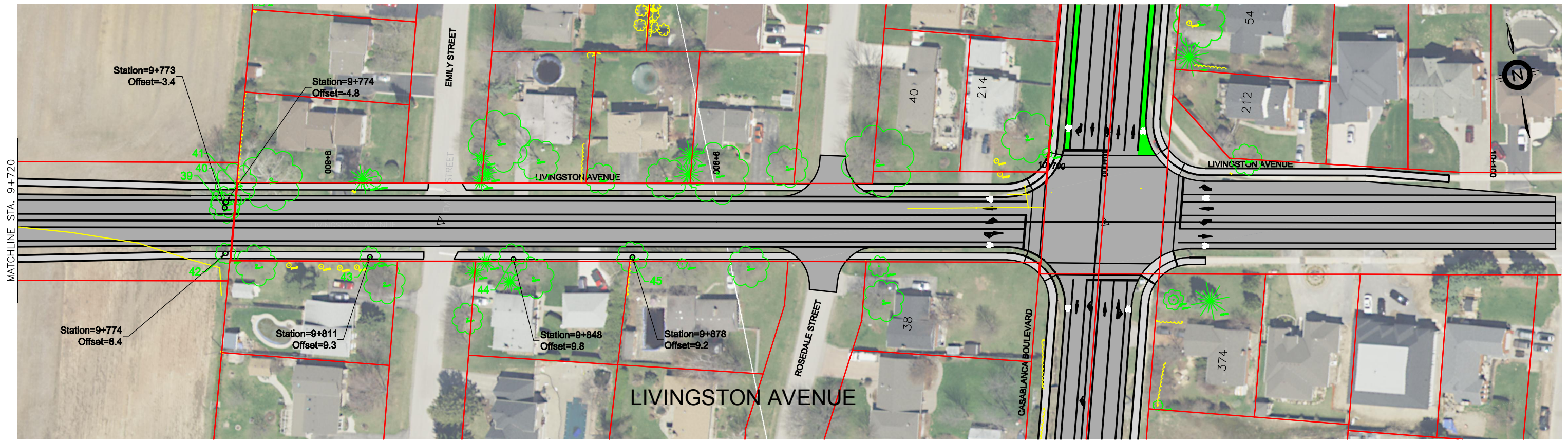
NOTES/LEGEND
 1 THE POSITION OF POLE LINES, CONDUITS, WATERMANS, SEWER AND OTHER UNDERGROUND UTILITIES AND STRUCTURES IS NOT NECESSARILY SHOWN ON THE CONTRACT DRAWINGS AND, WHERE SHOWN, THE ACCURACY OF THE POSITION OF SUCH UTILITIES AND STRUCTURES IS NOT GUARANTEED. BEFORE STARTING WORK, THE CONTRACTOR SHALL INFORM HIMSELF OF THE EXACT LOCATION OF ALL SUCH UTILITIES AND STRUCTURES AND SHALL ASSUME ALL LIABILITY FOR DAMAGE TO THEM.
 2 PROPERTY LINES WERE PLOTTED USING REGISTERED PLANS AND BARS LOCATED IN THE FIELD. TO VERIFY THE ACCURACY OF THESE PROPERTY LINES, A LEGAL SURVEY SHOULD BE PERFORMED PRIOR TO CONSTRUCTION.

DRAFTING
GCC
 DESIGN
SMP
 CHECKED BY
SMP
 APPROVED BY
DPM



CASABLANCA BOULEVARD
 STA. 10+800 TO STA. 11+200
 TREE INVENTORY PLAN

CONSULTANT FILE No. 18-7650	
DATE 2018-10-23	
SCALE AS SHOWN	
REF. No. #	
DWG No. 2	REV. 0



NO.	REVISION	DATE	INIT.
0	ISSUED FOR	YYYY-MM-DD	XXX

NOTES/LEGEND
 1 THE POSITION OF POLE LINES, CONDUITS, WATERMANS, SEWER AND OTHER UNDERGROUND AND OVERGROUND UTILITIES AND STRUCTURES IS NOT NECESSARILY SHOWN ON THE CONTRACT DRAWINGS AND, WHERE SHOWN, THE ACCURACY OF THE POSITION OF SUCH UTILITIES AND STRUCTURES IS NOT GUARANTEED. BEFORE STARTING WORK, THE CONTRACTOR SHALL INFORM HIMSELF OF THE EXACT LOCATION OF ALL SUCH UTILITIES AND STRUCTURES AND SHALL ASSUME ALL LIABILITY FOR DAMAGE TO THEM.
 2 PROPERTY LINES WERE PLOTTED USING REGISTERED PLANS AND BARS LOCATED IN THE FIELD. TO VERIFY THE ACCURACY OF THESE PROPERTY LINES, A LEGAL SURVEY SHOULD BE PERFORMED PRIOR TO CONSTRUCTION.

DRAFTING
GCC
 DESIGN
SMP
 CHECKED BY
SMP
 APPROVED BY
DPM



LIVINGSTON AVENUE
 STA. 9+720 TO STA. 10+116
 TREE INVENTORY PLAN

CONSULTANT FILE No. 18-7650	
DATE 2018-10-24	
SCALE AS SHOWN	
REF. No. #	
DWG No. 3	REV. 0